

# **in this together**

**ANNUAL REPORT 2013-14**





## Our Mission

People living with Parkinson's have access to comprehensive, relevant and flexible services, encouraging independence and quality of life.

Funding for Parkinson's research supports improved quality of life outcomes for people living with the condition, and the search for a cure.

## Our Values

### Sensitive

We understand the needs and challenges of people living with Parkinson's and their families and ensure services and supports are sympathetic and responsive to their needs.

### Responsive

We provide timely, accessible and flexible services and supports to people living with Parkinson's, their families, carers and health professionals.

### Innovative

We seek ways to improve outcomes for people living with Parkinson's and their families. We seek to promote a learning culture within our own organisation, the community and health sector to ensure advancements in research are reflected in new and original service methods and responses.

### Excellence

We provide quality services and supports in an environment that is committed to continuous improvement and establishing standards for people living with Parkinson's, their families and carers.

## Our Vision

A world without  
Parkinson's.  
Help for today,  
hope for  
tomorrow.



# About Parkinson's Victoria

## About Parkinson's

Parkinson's is a progressive, chronic and lifelong neurological condition. It is not fatal or contagious and there is no cure.

Parkinson's is a condition that affects the motor nervous system and alters co-ordination and movement. It also has a range of non-motor symptoms including depression, pain and problems with sleep. Symptoms result from the progressive degeneration of dopamine producing cells located in the brain.

Parkinson's affects people in different ways; no two people will have exactly the same symptoms or experience of Parkinson's.

## About Parkinson's Victoria

Parkinson's Victoria raises awareness and funds for services and research that improves the quality of life for 27,000 people living with Parkinson's in Victoria. Every day through our multi-disciplinary health team we provide information, education, advice and peer support services to improve quality of life of the Parkinson's community.

Founded in 1981 by four visionary women who were themselves diagnosed with Parkinson's, they provided information and mutual support to people with Parkinson's and their families. Today, our support extends to those living with Parkinson's, their families and carers, peer support groups and health care professionals.

Parkinson's Victoria is a not-for-profit organisation. While supported by the State Government of Victoria, we rely heavily on fundraising and generous donations from our community to continue and grow our delivery of support services.

## Parkinson's Peer Support Groups

Peer support provides the opportunity to learn more about living with Parkinson's and to enjoy the company of others who share similar experiences, situations and challenges.

There are also several Parkinson's Peer Support Groups with a special focus or activity, including Young Onset, Painting with Parkinson's, ParkinSong, Dance with Parkinson's, Tai Chi for Parkinson's, Deep Brain Stimulation and Atypical Parkinson's.

Parkinson's Peer Support Groups currently operate in the following areas:

### MELBOURNE

Bentleigh Bayside, Camberwell, Eltham, Essendon, Frankston, Hawthorn, Kororoit (Melton), Manningham (Doncaster), Monash (Glen Waverley), Pakenham, Preston, Ringwood, Rosebud, Werribee

### NORTH EAST

Beechworth, Benalla, Cobram, Corryong, Lancefield, Mansfield, Shepparton, Wangaratta, Wodonga, Yarrawonga

### SOUTH EAST

Bairnsdale, Lakes Entrance, Moe, Sale, South Gippsland (Leongatha), Warragul

### NORTH WEST

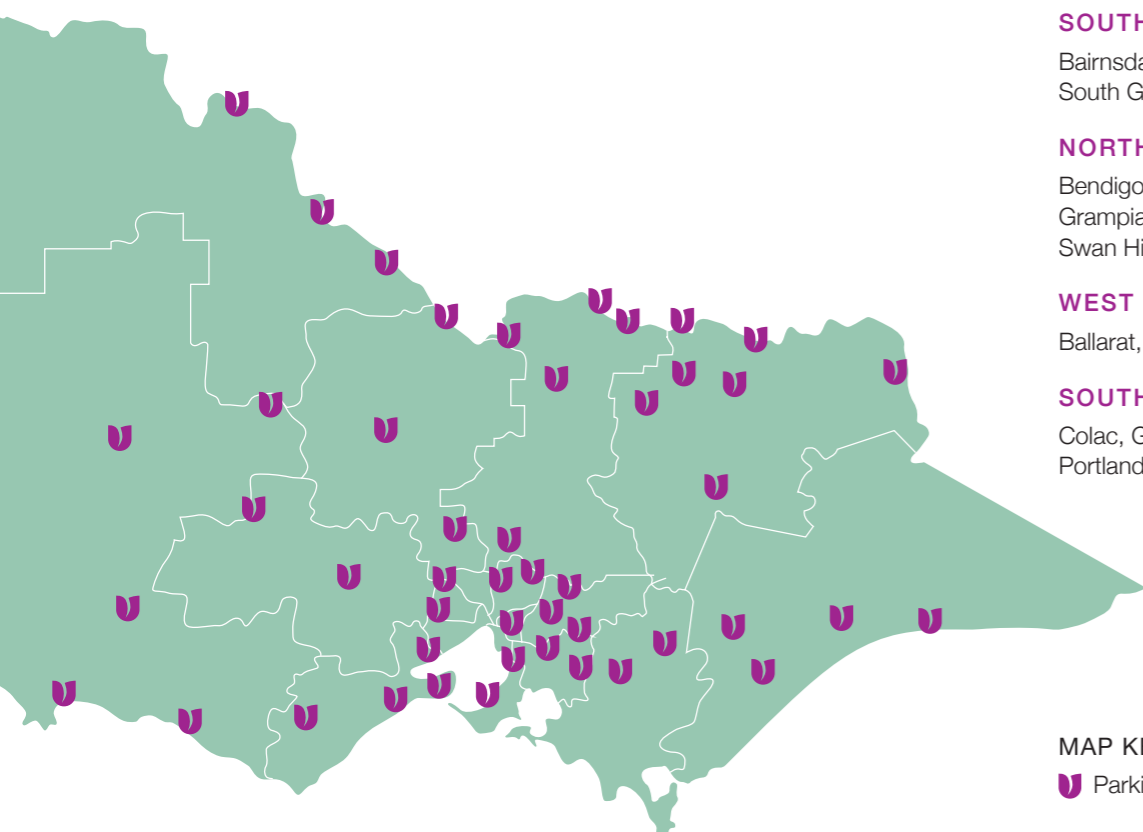
Bendigo, Cohuna, Echuca (Deniliquin), Grampians (Stawell), Kyabram, Mildura, Swan Hill

### WEST

Ballarat, Wimmera (Horsham), Wycheproof

### SOUTH WEST

Colac, Geelong, Hamilton, Ocean Grove, Portland, Warrnambool



### MAP KEY

Parkinson's Peer Support Groups

# This Year's Highlights

**\$1,339,682**

Revenue contributions were made that resulted in a solid financial performance in Victoria

**2,420**

Responses to phone contacts

**2,100**

People attended a Peer Support Group meeting

**An extraordinary bequest to Parkinson's Victoria made by the late Gladys Mary Fordyce Williams**

**2,810**

People, community and health professionals attended education sessions

**20%**

Increase in unique visitors to our website

**Recipient of the Sir Zelman Cowan Award was Karyn Spilberg**

## Treasurer's Report

Financially, 2013-14 was a year of review and consolidation for Parkinson's Victoria as it focused on building a sustainable organisation that is better able to meet future needs of the Parkinson's community.

Despite Parkinson's Victoria reporting an operational loss of \$127,660, the operational income (excluding extraordinary bequests) was 2% greater than the operating expense. This can be attributed to increased fundraising income. Our signature event, A Walk in the Park, continued to grow in 2013-14 and provided funding for growth in health program delivery.

The overall financial performance was demonstrated with a strong balance sheet to support planned growth and increased delivery, reporting net assets of \$3 million at year end. Parkinson's Victoria was able to meet all current obligations. The strong asset position will allow the organisation to develop an investment strategy in 2014-15.

Following a comprehensive review of financial systems, policies and governance processes, we have created a new chart of accounts and invested in a new financial reporting system. Further investment was placed in an organisation review and change management allowing for the adoption

of a new staffing structure that provides for delivery of support and outcomes for the Parkinson's community.

Overall, Parkinson's Victoria is in a sound position moving forward with greater investment in growth development planned for 2014-15.

Adam Conrad  
Treasurer



# Chairman and CEO's Report

## In this together. It's been a year of consolidation and growth for Parkinson's Victoria.

To adapt to the changing needs of the Parkinson's community, tighter government budgets and a more competitive fundraising landscape, in September 2013 the Board reviewed and endorsed a three year Strategic Plan that focuses on two strategic initiatives. These include:

### 1. Organisational Development and Sustainability

To continue to deliver services, Parkinson's Victoria will be adequately supported by governance and leadership, integrated organisational and operational systems, financial planning and investment and by structure, positions and people.

### 2. Service development and delivery

To achieve our mission, current and future clients and members of Parkinson's Victoria will be able to access timely and customised services underpinned by research, interactive technologies, excellence in direct service delivery, community and professional development, strategic relationships and licensing our knowledge and intellectual property.

We are pleased to report that this year, we are already achieving significant milestones outlined in the Strategic Plan.

In December, the Board endorsed a new governance model and planning framework to guide the development of key corporate governance policies. The governance model and planning framework provided for two new committees to be realigned:

- the Governance and Research Committee, chaired by Andrew Suggett (Vice President)
- the Finance and Investment Committee, chaired by Adam Conrad (Treasurer).

In February, the Board endorsed a new staff structure, creating four critical roles to deliver the growth of programs that better support people affected by Parkinson's.

In better enabling Parkinson's Victoria to achieve its mission, we have been able to focus more on delivering excellence to clients, members, health professionals and the wider Parkinson's community.

We have continued to provide support for people living with Atypical Parkinson's conditions, such as Progressive Supra-nuclear Palsy (PSP), Multiple System Atrophy (MSA) and Cortico Basal Syndrome (CBS) with targeted support group meetings and the ongoing delivery of information kits.

Honouring people in the community impacted by Parkinson's, we have continued to raise community awareness of Parkinson's with our annual A Walk in the Park. With coverage from local media once again helping raise our profile beyond the Walk itself and The Hon. Denis Napthine MP, Premier of Victoria walking in honour of his mother, this event attracted over 2,200 participants and raised \$170,000.

Research continues to be a significant focus for us. To help improve the lives of people living with Parkinson's, the Essence Research Project, in conjunction with Monash University, published their findings that demonstrated mindfulness can help reduce stress and improve symptom management.

Working collaboratively with Goulburn Valley Health and the Shepparton Support Group we have been able to support a research demonstration project focused on evaluating the benefits a Movement Disorder Nurse can provide to regional communities through localised clinical expertise. The delivery of this model of care is being keenly advocated for in other regional areas.

In this financial year, operating income increased by 17.8% with a corresponding increase in expenses, resulting from significant investments in infrastructure

to support growing service provision needs. The result of these operations were similar to results for previous years, subject to normal fluctuations. The results are affected by the level of non-operating income, namely bequests over which the Association has no control.

A special mention goes to Peter Raymond, who resigned from the Board after more than seven years of service, including as President. Peter has been and continues to be, a magnificent contributor to Parkinson's Victoria. The Board, on behalf of the entire organisation, thanks him for his wonderful service and wishes him all the best in the future.

On behalf of the Board and management, a big thank you to our staff for their hard work and commitment, that goes well beyond the nine-to-five working day. This commitment and the wonderful efforts of our Board, supporters, members, volunteers and donors gives Parkinson's Victoria its heart and soul.

We are truly excited to have laid the foundation for the coming year of growth across Victoria. We look forward to working more closely with our health and research partners, sponsors and supporters to be better able to serve the ever changing and growing needs of the Parkinson's community.

We are **In This Together**.



**Damian Farrell**  
Chair  
Parkinson's Victoria



**Emma Collin**  
CEO  
Parkinson's Victoria

# Parkinson's Victoria Board



**Damian Farrell**  
Chair  
B.A., ACU, FAIM, MAICD  
*Appointed: November 2012*



**Andrew Suggett OAM**  
Vice President  
Chair of Governance and Research Committee  
Dip. Acc., Cert. Retail Management  
*Appointed: November 2011*



**Joanna Hill**  
Secretary  
Finance and Investment Committee  
B.App.Sc.  
*Appointed: November 2011*



**Adam Conrad**  
Treasurer  
Chair of Finance and Investment Committee  
B. Comm., CPA  
*Appointed: November 2012*



**Assoc. Prof. David Finkelstein**  
Governance and Research Committee  
B.Sc., Grad. Dip. Scientific Instrumentation,  
M. Sc., Ph.D.  
*Appointed: May 2014*  
*Attended first meeting: July 2014*



**Sue Harper**  
Finance and Investment Committee  
B.A., Grad. Dip. Ontological Coaching  
*Appointed: November 2013*



**Karyn Spilberg**  
Governance and Research Committee  
B.Ed., Grad. Dip. Computer Education,  
Grad. Dip. English as a Second Language  
*Appointed: June 2014*  
*Attended first meeting: July 2014*

**Fred Van Ross** retired from the Board in 2013 after being appointed in November 2004 and serving his full term.

**Peter Raymond** resigned from the Board in 2014 after being appointed in 2006.

**Professor Meg Morris** resigned from the Board in 2013 after being appointed in 2011.

**Geoff Pearson** resigned from the Board due to ill health in 2014 after being appointed in 2013.



## Fred and Christine

Fred and Christine have been on the Parkinson's journey together since Fred's diagnosis in 2003. Whilst the diagnosis changed their retirement travel plans, Fred actively sought out his local Parkinson's Peer Support Group. He soon became the President of the Essendon Support Group and has helped to grow its membership to 40 members.

"Parkinson's is a mate you always have and it lets you know it's there, but I don't allow it to take over"

- Fred



## Health Education



**The health team's focus of enriching the Parkinson's community with information and education is not only a key deliverable of the Strategic Plan, it empowers people living with Parkinson's, families and carers to improve their quality of life.**

This year the health team developed two national fact sheets (in partnership with the Continence Foundation of Australia).

Our education program for people with Parkinson's, carers, family members and health professionals, included the following highlights:

### Young Onset Parkinson's Conference

The National Young Onset conference was held in Melbourne in September and attended by over 100 delegates from across Australia. Dynamic and energising, topics included treatment options, symptom control, sexuality and intimacy, exercise, legal and financial planning.

### "It's More than Words" Communication in Parkinson's Seminar

This multi-disciplinary professional development seminar for health professionals explored the cognitive and linguistic challenges of Parkinson's and was attended by 85 delegates from across Victoria.

### Recently Diagnosed Seminar

Dedicated to meeting the education and information needs of people recently diagnosed with Parkinson's, this seminar was attended by over 80 people and include a key note address by Dr Katya Kotschet.

### Carers Seminar

A carers seminar for people with Atypical Parkinson's was attended by over 40 people including interstate and international guests.

### Cameroon Training Seminars

Acknowledging the increase in their aging population, two seminars for health professionals were delivered as part of the International Movement Disorder Society's ongoing education program.

### Regional Seminars

Regional seminars were conducted in Kyabram and Lancefield.



## Terry, Helen and Anne

Often seen around Camberwell on his scooter, Terry is a local ambassador for Parkinson's. Supported by wife, Helen, daughter Anne and other family members, Terry is an active member of the Glenferrie Rotary Club, attends Camberwell Peer Support Group meetings and participates in A Walk in the Park. He also enjoys going to the footy, gardening and travelling.



## Strengthening our Community



Sheree Ambrosini – Goulburn Valley's Movement Disorder Nurse

### World Parkinson's Day

World Parkinson's Day on April 11 each year, seeks to raise awareness of Parkinson's and improve the lives of more than 7 million living with the condition globally.

This year, Parkinson's Victoria partnered with the Florey Institute of Neuroscience and Mental Health to bring together a symposium of neurologists, clinicians and researchers to review the latest developments in Parkinson's research.

This was followed by a public lecture at the Melbourne Brain Centre and attended by 250 people with Parkinson's, their family and friends, health professionals and researchers.

Professors Meg Morris and Mal Horne delivered a highly informative session discussing current treatments as well as up and coming research.

### Growth in Peer Support Groups

In 2013-14 Parkinson's Victoria experienced a 20% increase in the number of Peer Support Groups with 57 now operating across the state. Support groups provide an opportunity for connectedness and reduce social isolation, often experienced by people living with Parkinson's. Acknowledging community interest, many of the newly developed Peer Support Groups are linked to special interests: including Yoga, Deep Brain Stimulation, Dance and ParkinSong.

### Forging stronger support in the Goulburn Valley

In an Australian first, Parkinson's Victoria continues its partnership with Goulburn Valley Health and the Shepparton Parkinson's Support Group to fund a Movement Disorder Nurse in the Goulburn Valley. The three organisations co-fund this position as a pilot program with the aim of demonstrating that people with Parkinson's in the Goulburn Valley will receive easier, better and more efficient access to medical advice with a specialist nurse service.

The Movement Disorder Nurse brings many benefits to the community including delivering care closer to people's homes, being able to attend to emergency situations more quickly and educating patients and carers about Parkinson's and support services available.

The Movement Disorder Nurse supports not only people with Parkinson's but also conditions including Progressive Supranuclear Palsy (PSP), Multiple System Atrophy (MSA) and Cortico Basal Syndrome (CBS).



# In Our Community



## A Walk in the Park

The 2013 Walk in the Park on Sunday 25 August once again filled Federation Square to honour and support everyone impacted by Parkinson's.

As the largest Walk nationally and Parkinson's Victoria's biggest fundraiser, over 2,240 registered Walkers joined The Hon. Denis Napthine MP, Premier of Victoria, federal members Ms Anna Burke MP and The Hon. Josh Frydenberg MP and comedian Shane Jacobson in a leisurely walk along the Yarra.

Just over 50% of Walkers were walking for the first time with a resounding 60% walking to show support for a loved one.

Thanks to the amazing effort of Walkers, fundraisers and corporate sponsors, over \$170,000 was raised through donations and sponsorship.

## Community Fundraising

Community fundraising is an incredibly valuable way for friends in our community to take time out of their schedules to raise money for a cause that they are passionate about – supporting people with Parkinson's and ultimately finding a cure. Some highlights for the year include:

### New York Marathon

In November 2013, Alan Barber of Ocean Grove ran the New York Marathon to raise awareness and funds to support Parkinson's Victoria. Inspired by his friend Richard who is living with Young Onset Parkinson's, Alan set himself a goal of not only running one of the world's most famous Marathons, but to also raise \$10,000. In doing so, he raised more than \$17,500 and came back to Ocean Grove with the desire to advocate for a specialist nurse in the Geelong/Barwon region and create many more fundraising events.

### Paddle for Parkinson's – Mildura to Echuca

On April 6, Sam Faulkner and Tyler McPhee set off on an incredible journey that saw them kayak 800 kilometres along the Murray River from Echuca to Mildura to raise money and awareness of Parkinson's.

Inspiration for the Paddle came from Sam as both a grandmother and grandfather have Parkinson's, together with a few family friends. The paddle took 16 days and the boys raised \$19,143 for Parkinson's Victoria and program development of Peer Support Groups in Mildura and Swan Hill.

### Tony Fleming's Epic Journey

In May, Tony and friends rode their bikes from Portland to Noosa proudly raising funds for the Parkinson's Victoria and Portland Pathways Group. With the support of many sponsors along the way, they were able to raise \$9,280 for Parkinson's Victoria.



## John and Julie

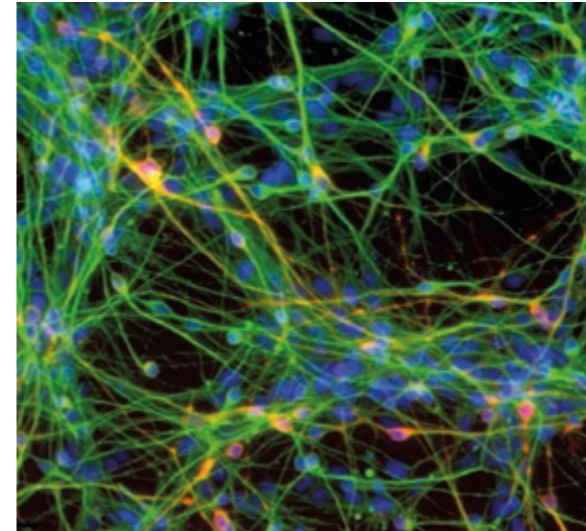
John and Julie have been on the Parkinson's journey for the past 15 years since John's diagnosis. During this time, they have supported each other; assisted friends diagnosed with Parkinson's; raised significant funds for Parkinson's Victoria through the Tulip Ball; been involved in research trials as well as running a business, travelling, playing competitive sport, being grandparents and sharing lots of laughs.

"You don't know what life is going to throw at you, so make sure you have fun every day"

- John



## Research



**Each year, the Parkinson's Victoria Board receives a number of applications to support research. This year projects focussed on Parkinson's-specific models of best practice care while further funding provided support for the Victorian Brain Bank Network.**

### Victorian Brain Bank Network

The Victorian Brain Bank Network (VBBN) serves as a link between clinicians, neuro pathologists and research scientists working towards understanding the cause of Parkinson's, what therapies, knowledge and actions will lead to better care and ultimately a cure for the condition. Over the past 12 months VBBN collected, processed and stored 49 new brain donations of which 8 cases were confirmed neuropathologically as Parkinson's or related diseases. Over this time, 9 new or continuing Australian and international research projects applied for and were granted access to Parkinson's (and related diseases) tissues to increase the awareness of the impact and progression of the condition.

### Essence Research Project

Funded by Parkinson's Victoria and Monash University, this project was one of the first global projects to investigate the impact of Mindfulness techniques and Parkinson's. Highlights of the research included:

- Participants improved their ability to manage stress
- There was a slight increase in depression in participants (thought to be related to an increased awareness of the illness)
- Increased mindfulness in participants
- Increased ability to complete daily living activities

Narrative from participants demonstrated their enjoyment in activities related to the project and that it improved understanding and management of their condition.

### Dance for Parkinson's Research Project

A four-week Argentinian tango for Parkinson's research project run by researchers from La Trobe University, demonstrated that Latin dance appears to be beneficial for some people living with Parkinson's. This study will guide the planning and development of future projects on a larger scale.

### Physiotherapy Practice for Parkinson's Research Project

It has been recognised that current physiotherapy practice in Australia does not appear to be keeping pace with evidence based practice in Europe and the United States. The aim of this research project is to develop a science led, evidence based, health professional education program for physiotherapists treating people with Parkinson's and to implement the program for physiotherapists in Victoria.



## Jill, Natalie and Alice

Since being diagnosed over 12 years ago, Jill has been able to live life to the fullest, surrounded by the love and support from her daughter Natalie, grand-daughter Alice and other family members. She has taken up art as a therapeutic activity and been part of two art shows, acted as a Parkinson's Ambassador, while also continuing her long-standing career teaching calisthenics.



## Advocating for a brighter future



Throughout 2013-14, Parkinson's Victoria continued to advocate and represent the Parkinson's community at Federal, State Government and Community Service Sector levels for improved recognition and support.

In doing so, our goal was to ensure that Parkinson's Victoria was able to establish or re-establish relationships with government and continue to build the profile of Parkinson's as a health priority.

Parkinson's Victoria was active in ensuring that the needs of people with Parkinson's and Atypical Parkinson's who fall into the scope of the National Disability Insurance Agency (NDIA) were recognised and met.

In addition, Parkinson's Victoria submitted a response to the Senate Enquiry into Speech Pathology services. The response acknowledged current gaps and difficulties in accessing Speech Pathology services to respond to the communication and swallowing difficulties experienced as a symptom of Parkinson's and Atypical Parkinson's.

The Hon. Denis Napthine MP, Premier of Victoria, together with The Hon. Josh Frydenberg MP (Federal Member for Kooyong) and Ms Anna Burke (Federal Member for Chisholm), demonstrated their support by attending A Walk in the Park 2013.

Advocacy included representing the needs of the Parkinson's community in the Community Service Sector with participation in a review facilitated by the Australian

College of Nursing of the Clinical Guidelines for Percutaneous Endoscopic Gastrostomy (feeding tube) insertion. This is often a complex decision for people living with progressive neurological conditions.

Parkinson's Victoria continued to collaborate with the Salvation Army gambling counselling division as a class action proceeds relating to people affected by gambling addiction whilst taking Dopamine agonists during a period when this increasingly known side effect was inconsistently communicated to people on these medications.

At a local level, collaboration with Progressive Neurological organisations worked to identify what services would be helpful for people living with neurological conditions in the Barwon and Golden Plains region. Results of community forums and surveys will be used to develop subsequent proposals for a Progressive Neurological Support Clinician/Nurse.

Parkinson's Victoria also worked with Peer Support Groups to advocate for awareness and recognition of the needs of the local Parkinson's community in Mildura, Ringwood and Camberwell.

At an individual level, Parkinson's Victoria provided advocacy facts and tips through our Signpost magazine and on the website so that members of the community felt supported in expressing their views during the Federal and State Government election periods.

Karyn was diagnosed with Parkinson's more than 10 years ago. Since then, she has immersed herself in the national and international Parkinson's community, not only educating herself about Parkinson's but also about the community and its needs.

Along her journey, Karyn has made significant contributions to the Parkinson's community including founding Young@Park (a support group for people living with Young Onset Parkinson's), sharing her knowledge and experiences online through her blog and raising thousands of dollars to support services and research.

She has established herself as a media spokesperson to raise awareness, including coverage of her DBS surgery. In 2013, she was awarded the Sir Zelman Cowan Award and appointed a member of the Board of Parkinson's Victoria in June 2014.



### Paula, Gary and Owen

Paula has been living with Young Onset Parkinson's since 2006. Along with her partner, Gary, they are proud and busy parents of 3 year old Owen. Paula's positive attitude, her enjoyment of running and living each day to the fullest has seen her complete half marathons, the Great Train Race against Puffing Billy and walk the Camino de Santiago pilgrim trail in Spain.

"Parkinson's has taught me to not put things off, value the important things in my life and enjoy each day as it comes"

– Paula



## Our partnerships



**Building strategic relationships with our fellow Associations across Australia and those with specialist expertise is key to delivering stronger, more positive outcomes for the Parkinson's community.**

#### National Network of Parkinson's Associations

To reflect our bold mission and strong community spirit, the national network has updated our look and voice to ensure the brand of all Parkinson's associations is developed with a consistent, modern, bright and clean look.

In another significant initiative, the national network, with the support of Parkinson's Victoria, have developed a strategic approach to developing information resources nationally, allowing for greater rigour and consistency in the provision of health related content.

The national network also worked together to advocate to the Federal Government to have Parkinson's recognised as a chronic illness.

#### Continence Foundation of Australia

The aim of this collaboration was to provide accurate information for people impacted by Parkinson's and health professionals to better manage incontinence issues, a symptom that often precipitates admission to residential care. Through this collaboration, national fact sheets were produced on bladder and bowel function in Parkinson's. It also included a health care professional information video discussing continence issues in Parkinson's.

#### Department of Health and Ageing

Parkinson's Victoria played an active ongoing role in this national project with the Department of Health and Ageing to develop education materials that better support workers in the aged care sector.

#### Calvary Bethlehem Hospital

Parkinson's Victoria participated in guiding the development of a DHS funded pilot aiming to improved clinical outcomes for people with Progressive Neurological illnesses in the Barwon region. This project aimed to improve links with dedicated neurology and allied health services and will be of particular importance for people living with complex Parkinson's and Atypical Parkinson's symptoms.

#### Florey Institute of Neuroscience and Mental Health

Parkinson's Victoria and the Florey Institute collaborated for the first time to commemorate World Parkinson's Day with a symposium of neurologists, clinicians and researchers to present the latest developments in Parkinson's research.





**Financial Statements  
for the year ended  
30 June 2014**



**PARKINSON'S VICTORIA INC.  
AUDITORS REPORT**



Advantage Advisors Audit Partnership  
 Audit & Assurance Services  
 Level 7, 114 William Street  
 Melbourne VIC 3000  
 Australia  
 GPO Box 2286  
 Melbourne VIC 3001  
 Australia  
 ABN 47 075 804 075  
 T +61 3 9274 0600  
 F +61 3 9274 0660  
 audit@advantageadvisors.com.au  
 advantageadvisors.com.au

**INDEPENDENT AUDITOR'S REPORT  
TO THE MEMBERS OF PARKINSON'S VICTORIA INCORPORATED**

We have audited the accompanying financial report of Parkinson's Victoria Incorporated, being a special purpose financial report, which comprises the statement of financial position as at 30 June 2014, the statement of profit or loss and other comprehensive income and statement of changes in equity and statement of cash flows for the year then ended, notes comprising a summary of significant accounting policies and other explanatory information and the statement by members of the Board.

**Board's Responsibility for the Financial Report**

The Board is responsible for the preparation and fair presentation of the financial report and has determined that the basis of preparation described in Note 1, is appropriate to meet the financial reporting requirements of the *Associations Incorporation Reform Act 2012*, and is appropriate to meet the needs of the members. The Board is also responsible for such internal control as the Board and management determines is necessary to enable the preparation and fair presentation of the financial report that is free from material misstatement, whether due to fraud or error.

**Auditor's Responsibility**

Our responsibility is to express an opinion on the financial report based on our audit. We have conducted our audit in accordance with Australian Auditing Standards. Those standards require that we comply with relevant ethical requirements relating to audit engagements and plan and perform the audit to obtain reasonable assurance about whether the financial report is free from material misstatement.

An audit involves performing procedures to obtain audit evidence about the amounts and disclosures in the financial report. The procedures selected depend on the auditor's judgement, including the assessment of the risks of material misstatement of the financial report, whether due to fraud or error. In making those risk assessments, the auditor considers internal control relevant to the association's preparation and fair presentation of the financial in order to design audit procedures that are appropriate in the circumstances, but not for the purpose of expressing an opinion on the effectiveness of the association's internal control. An audit also includes evaluating the appropriateness of accounting policies used and the reasonableness of accounting estimates made by management, as well as evaluating the overall presentation of the financial report.

We believe that the audit evidence we have obtained is sufficient and appropriate to provide a basis for our audit opinion.



Liability limited by a scheme approved under professional standards legislation.



**PARKINSON'S VICTORIA INC.  
AUDITORS REPORT**



**INDEPENDENT AUDITOR'S REPORT  
TO THE MEMBERS OF PARKINSON'S VICTORIA INCORPORATED (Continued)**

**Independence**

In conducting our audit, we have complied with the independence requirements of the Australian professional ethical pronouncements.

**Basis for Qualified Opinion**

Donations and events and fundraising are a significant source of revenue for Parkinson's Victoria Inc. Parkinson's Victoria Inc. has determined that it is impracticable to establish control over the collection of donations and events and fundraising prior to entry into its financial records. Accordingly, as the evidence available to us regarding revenue for this source was limited, our audit procedures with respect to donations and events and fundraising had to be restricted to the amounts recorded in the financial records. We therefore are unable to express an opinion whether donations and events and fundraising of Parkinson's Victoria Inc. obtained are complete.

**Qualified Opinion**

In our opinion, except for the possible effects on the matter described in the Basis for Qualified Opinion paragraph, the financial report of Parkinson's Victoria Inc. presents fairly, in all material respects, the financial position as at 30 June 2014 and its financial performance for the year then ended in accordance with the accounting policies described in Note 1 to the financial statements and *Associations Incorporation Reform Act 2012*.

**Basis of Accounting and Restriction on Distribution**

Without modifying our opinion, we draw attention to Note 1 to the financial report, which describes the basis of accounting. The financial report has been prepared to assist Parkinson's Victoria Incorporated to meet the requirements of the *Associations Incorporation Reform Act 2012*. As a result, the financial report may not be suitable for another purpose.

*Advantage Advisors*

ADVANTAGE ADVISORS AUDIT PARTNERSHIP  
CHARTERED ACCOUNTANTS

*Ken Glynn*

KEN GLYNN  
PARTNER

Dated in Melbourne on this 24<sup>th</sup> day of October 2014.



**PARKINSON'S VICTORIA INC.  
BOARD MEMBERS' REPORT  
FOR THE YEAR ENDED 30 JUNE 2014**

Your Board members present this report to the members of Parkinson's Victoria Inc. for the financial year ended 30 June 2014.

Board Members	Year Appointed	Year Resigned/Retired	Meetings Attended
Peter Raymond	2006	2014	6
Fred Van Ross	2004	2013	4
Joanna Hill	2011	-	6
Professor Meg Morris	2011	2013	2
Andrew Suggett	2011	-	7
Damien Farrell	2012	-	7
Adam Conrad	2012	-	5
Geoff Pearson	2013	2014	2
Sue Harper	2013	-	5
Emma Collin (non-voting)	2013	-	8

The Association is a not for profit community service organisation which is incorporated under the Associations Incorporation Act Victoria.

**Short and long term objectives and strategy**

The Association's short term and long term objectives are to:

- Provide information and support to people, their families and carers of Parkinson's disease sufferers
- Create and enhance a positive understanding of Parkinson's disease within the community
- Help fund research to find a cure for Parkinson's disease

The Association's strategy for achieving these objectives includes:

- Establishing support groups and providing them with up to date information and support.
- Education sessions for Parkinson's disease sufferers, carers, families and health professionals.
- Fundraising through grants from Commonwealth, State and Local Governments, gifts, donations, legacies, grants, appeals and giving programs.

**Significant Changes**

There has been no significant change to the nature of that activity for the year.

**Operating Result**

The net deficit for the financial year was \$127,660 (2013 Surplus: \$1,057,815).

During the financial year the Association continued in its activities. The results of these operations were similar to results for previous years subject to normal fluctuations. The results are affected by the level of non-operating income, especially bequests over which the Association has no control.

No matters of circumstances have arisen since the end of the financial year which significantly affected or may significantly affect the operations of the Association, the results of those operations, or the state of affairs of the Association in future.

No member of the Board has received or become entitled to receive, during or since the financial year, a benefit because of a contract made by the association with a Board member, a firm of which a Board member is a member, or an entity in which a Board member is employed or has substantial financial interest.

Signed in accordance with a resolution of the members of the Board.



**Joanna Hill**

Secretary

Dated this 13th day of October 2014



**Damien Farrell**

President

**PARKINSON'S VICTORIA INC.  
STATEMENT OF PROFIT OR LOSS AND OTHER COMPREHENSIVE INCOME  
FOR THE YEAR ENDED 30 JUNE 2014**

	Notes	2014 \$	2013 \$
Revenue	2	1,339,682	2,326,363
Employee benefits expense	3	(714,677)	(640,800)
Depreciation		(26,069)	(28,762)
Operating lease expense	3	(76,384)	(73,008)
Finance costs	3	(4,103)	(4,120)
Other expenses	3	(646,109)	(521,858)
<b>Surplus(deficit) before income tax</b>		<b>(127,660)</b>	<b>1,057,815</b>
Income Tax expense	1(m)	-	-
<b>Surplus(deficit) for the year</b>		<b>(127,660)</b>	<b>1,057,815</b>
Other comprehensive income		-	-
<b>Total comprehensive income</b>		<b>(127,660)</b>	<b>1,057,815</b>

The accompanying notes form part of these financial statements.



**PARKINSON'S VICTORIA INC.**  
**STATEMENT OF FINANCIAL POSITION**  
**AS AT 30 JUNE 2014**

	Notes	2014 \$	2013 \$
<b>CURRENT ASSETS</b>			
Cash and Cash Equivalents	4	3,043,206	3,175,069
Trade and Other Receivables	5	4,030	22,712
Inventories	6	8,016	10,625
Other Current Assets	7	97,282	78,201
<b>TOTAL CURRENT ASSETS</b>		<b>3,152,534</b>	<b>3,286,607</b>
<b>NON-CURRENT ASSETS</b>			
Plant and Equipment	8	50,629	55,094
<b>TOTAL NON-CURRENT ASSETS</b>		<b>50,629</b>	<b>55,094</b>
<b>TOTAL ASSETS</b>		<b>3,203,163</b>	<b>3,341,701</b>
<b>CURRENT LIABILITIES</b>			
Trade and Other Payables	9	225,136	218,531
<b>TOTAL CURRENT LIABILITIES</b>		<b>225,136</b>	<b>218,531</b>
<b>NON-CURRENT LIABILITIES</b>			
Trade and Other Payables	9	3,711	21,194
<b>TOTAL NON CURRENT LIABILITIES</b>		<b>3,711</b>	<b>21,194</b>
<b>TOTAL LIABILITIES</b>		<b>228,847</b>	<b>239,725</b>
<b>NET ASSETS</b>		<b>2,974,316</b>	<b>3,101,976</b>
<b>MEMBERS' FUNDS</b>			
Members' Funds	10	2,399,036	2,572,577
Research Funds	10	575,280	529,399
<b>TOTAL MEMBERS' FUNDS</b>		<b>2,974,316</b>	<b>3,101,976</b>

The accompanying notes form part of these financial statements.

**PARKINSON'S VICTORIA INC.**  
**STATEMENT OF CHANGES IN MEMBERS' FUNDS**  
**FOR THE YEAR ENDED 30 JUNE 2014**

	Members' Funds \$	Research Funds \$	Total \$
<b>Balance as at 1 July 2012</b>	1,542,024	502,137	2,044,161
Surplus for the year	1,030,553	27,262	1,057,815
Other comprehensive income	-	-	-
<b>Total comprehensive income</b>	<b>1,030,553</b>	<b>27,262</b>	<b>1,057,815</b>
<b>Balance as at 30 June 2013</b>	<b>2,572,577</b>	<b>529,399</b>	<b>3,101,976</b>
<b>Balance as at 1 July 2013</b>	2,572,577	529,399	3,101,976
Surplus(deficit) for the year	(173,541)	45,881	(127,660)
Other comprehensive income	-	-	-
<b>Total comprehensive income</b>	<b>(173,541)</b>	<b>45,881</b>	<b>(127,660)</b>
<b>Balance as at 30 June 2014</b>	<b>2,399,036</b>	<b>575,280</b>	<b>2,974,316</b>

The accompanying notes form part of these financial statements.

	Notes	2014 \$	2013 \$
<b>CASH FLOWS FROM OPERATING ACTIVITIES</b>			
Receipts from ordinary activities		1,271,815	2,203,265
Payments to suppliers and employees		(1,493,506)	(1,203,486)
Net cash (used in) provided by operating activities	11 (b)	(221,691)	999,779
<b>CASH FLOWS FROM FINANCE ACTIVITIES</b>			
Interest received		116,222	127,382
Finance costs		(4,103)	(4,120)
Net cash provided by finance activities		112,119	123,262
<b>CASH FLOWS FROM INVESTING ACTIVITIES</b>			
Proceeds from sale of property, plant, equipment		-	1,350
Purchase of property, plant, equipment		(22,291)	(27,069)
Net cash used in investing activities		(22,291)	(25,719)
Net (decrease)increase in cash held		(131,863)	1,097,322
Cash at beginning of financial year		3,175,069	2,077,747
Cash at end of financial year	11 (a)	3,043,206	3,175,069

The accompanying notes form part of these financial statements.



## PARKINSON'S VICTORIA INC. NOTES TO THE FINANCIAL STATEMENTS FOR THE YEAR ENDED 30 JUNE 2014

### ASSOCIATION INFORMATION

The financial statements of Parkinson's Victoria Inc. for the year ended 30 June 2014 were authorised for issue in accordance with a resolution of the Board on 13 October 2014.

Parkinson's Victoria Inc. is an association incorporated in accordance with the Associations Incorporation Reform

Act 2012.

### 1. SUMMARY OF ACCOUNTING POLICIES

#### (a) Basis of Preparation

The financial statements are Special Purpose Financial Statements and have been prepared in accordance with the financial reporting requirements of the Associations Incorporation Reform Act 2012. The Board has determined that the Association is not a reporting entity.

The financial report has been prepared in accordance with the Associations Incorporation Reform Act 2012 and the following Australian Accounting Standards:

- AASB 101: Presentation of Financial Statements
- AASB 107: Statement of Cash Flows
- AASB 108: Accounting Policies, Changes in Accounting Estimates and Errors
- AASB 110: Events after the Reporting Period
- AASB 116: Property Plant & Equipment
- AASB 117: Leases
- AASB 119: Employee Benefits
- AASB 137: Provisions, Contingent Liabilities and Contingent Assets
- AASB 1031: Materiality

No other applicable Accounting Standards, Australian Accounting Interpretations or other authoritative pronouncements of the Australian Accounting Standards Board have been applied.

The financial report has been prepared on an accrual basis and is based on historical costs and does not take into account changing money values except where specifically stated. Cost is based on the fair values as the consideration given in the exchange of assets. The accounting policies are consistent with the previous year unless otherwise stated and have been adopted in the preparation of the financial report.

The financial statements incorporate only the assets and liabilities of Parkinson's Victoria Inc. as at 30th June 2014 and its results for the year then ended.

#### (b) Significant Accounting Estimates and Judgements

The preparation of financial statements requires management to make judgements, estimates and assumption that affect the application of policies and reported amounts as assets, liabilities,

income and expenses that are not readily apparent from other sources. The estimates and associated assumptions are based on historical experience and other factors that are believed to be reasonable under the circumstances, the results of which form the basis of making the judgements. Actual results may differ from these estimates.

The estimates and underlying assumptions are reviewed on an ongoing basis. Revision to accounting estimates are recognised in the period in which the estimate is revised if the revision affects only that period or in the period of the revision and future periods if the revision affects both current and future periods. Significant judgements estimates and assumptions made by management in the preparation of these financial statements are outlined below:

#### Long Service Leave Provision

In determining the long service leave provision assumptions have been made in relation to retention probabilities, inflation rates and discounts

#### (c) Revenue

Revenue is recognised when the Association is legally entitled to the income and the amount can be quantified, with reasonable accuracy. Revenues are recognised net of the amounts of goods and services tax (GST) payable to the Australian Taxation Office.

Donations collected are recognised as revenue when the association gains continual economic benefit that are probable and the amount of the donation can be measured reliably.

Bequests are recognised as income when received.

Grant revenue is recognised as revenue when the association gains control. When there are conditions attached to the grant revenue relating to the use of those funds for specific purposes it is recognised in the statement of financial position as a liability until such conditions are met as services provided. Where projects span a number of reporting periods, the income is recognised when the expenditure is incurred.

Interest income is recognised as it accrues using the effective interest method. Interest earned on bequest funds received are conditional that specified services are delivered, or conditions fulfilled have been shown as interest – research .

Membership income is recognised when received.

Event income is recognised after the event is completed.

#### (d) Expenditure

All expenditure is accounted for on an accrual basis and has been classified under a heading that aggregate all costs related to the category. Where costs cannot directly be attributed to a particular category, they have been allocated to activities on a basis consistent with use of the resources.

Fundraising and event costs are those incurred that can be directly attributable to the fund raising event and are not recognised as an expense until after the event has been completed.

## PARKINSON'S VICTORIA INC. NOTES TO THE FINANCIAL STATEMENTS FOR THE YEAR ENDED 30 JUNE 2014

Research Grant amounts are granted to institutions in Australia that specialise in research into the causes and treatment of Parkinson's disease. Grants are recognised when paid to the institution or when there is an obligation to make payment under a contract.

Expenditure relating to conditional bequest funds has been expended as incurred, providing the conditions have been satisfied.

#### (e) Cash and Equivalent

Cash and cash equivalents in the balance sheet comprise of cash on hand, deposits held at call with banks, other short term highly liquid investments with original maturities of three months or less and which are subject to insignificant risk of changes in value, and bank overdrafts. Bank overdrafts are shown within short-term borrowings in current liabilities on the statement of financial position. For the purposes of the cash flow statement, cash and cash equivalents are defined above, net of any outstanding bank overdrafts.

#### (f) Trade and other Receivables

Trade receivables which comprise amounts due from sales from services provided are recognised sales and carried at original invoice amount less an allowance for any uncollectible amounts.

The carrying amount of the receivable is deemed to reflect fair value.

#### (g) Inventories

Inventories comprise goods for resale at a nominal consideration as part of the Associations fund raising and educational activities. Inventories of goods purchased for resale are valued at the lower of cost and net realisable value. Net realisable value is the estimated selling price in the ordinary course of business, less estimated costs necessary to make the sale.

#### (h) Property, Plant and Equipment

Each class of plant, equipment and vehicles is stated at cost less accumulated depreciation and any impairment losses.

#### Plant, Equipment and Vehicles

The carrying amount of plant, equipment and vehicles is reviewed annually by the board of management to ensure it is not in excess of the recoverable amount from those assets. The recoverable amount is assessed on the basis of the expected cash flows which will be received from the assets employment and subsequent disposal. The expected net cash flows have not been discounted to present values in determining recoverable amounts. An asset's carrying value is written down immediately to its recoverable amount where the carrying value is in excess of the estimated recoverable amount.

#### Depreciation and amortisation

The depreciable amount of all fixed assets are depreciated on a straight line basis over their estimated useful lives to the entity commencing from the time the asset is held ready for use. The depreciation rates used for each class of asset are:

Class of asset	Depreciation rate
Furniture	15.00%
Computer Equipment including Web Design	20 – 33.30%
Motor Vehicle	18.75%
Electrical Equipment	20 - 30%

The assets' residual values and useful lives are reviewed, and adjusted if appropriate, at the end of each reporting period. Assets costing less than \$500 are depreciated at 100% in the year of purchase.

#### (i) Impairment of Assets

The carrying value of plant, equipment and vehicles are reviewed for impairment at each reporting date with recoverable amounts being estimated when events or changes in circumstances indicate that the carrying value may be impaired.

The recoverable amount in plant, equipment and vehicles is the higher of fair value less costs to sell and value in use. In respect of not for profit entities, future economic benefits of an asset are not primarily dependent on the assets ability to generate net cash inflows where the entity would, if deprived of the asset, replace its remaining future economic benefits. For these assets, value in use is determined as the depreciated replacement cost.

The depreciated replacement cost of an asset is its cost measured by reference to the lowest cost at which the gross future economic benefit of that asset could currently be obtained in the normal course of business. Any excess of the asset's carrying value over its recoverable amount is recognised immediately in the Statement of Profit or Loss and Other Comprehensive Income.

Where an impairment loss on a revalued asset is identified, this is debited against the revaluation surplus in respect of the same class of asset to the extent that the impairment loss does not exceed the amount in the revaluation surplus for that same class of asset.

#### (j) Project Deferred Income

The liability for deferred income is the unutilised amounts of grants received on the condition that specified services are delivered or conditions are fulfilled. The services are usually provided or the conditions usually fulfilled within 12 months of receipt of the grant. The grant is not recognised as income until conditions are satisfied and expenditure is made.

#### (k) Trade Creditors and Payables

Trade payables and other payables represent liabilities for goods and services provided to the association prior to the end of the financial year that are unpaid. These amounts are usually settled in 30 days. The carrying amount of creditors and payables is deemed to reflect fair value.



**PARKINSON'S VICTORIA INC.  
NOTES TO THE FINANCIAL STATEMENTS  
FOR THE YEAR ENDED 30 JUNE 2014**

**(l) Employee Benefits**

Employee benefits comprise wages, salaries, annual and long service leave and contributions to superannuation plans.

Liabilities for wages and salaries that are expected to be settled within 12 months of the reporting date are recognised in other payables in respect as employees' services up to the reporting date. Liabilities for annual leave in respect of employees' services up to the reporting date which are expected to be settled within 12 months after the end of the period in which the employees render the related services are recognised in the provision for annual leave. Both liabilities are measured at the amounts expected to be paid when the liabilities are settled.

The liability for long service leave is recognised and measured at the present value of expected future payments to be made in respect of services provided by employees up to the reporting date using the projected unit credit method. Consideration is given to expected future wage and salary levels, experience of employee departures, and periods of service. Expected future payments are discounted using market yields at the reporting date on national government bonds with terms to maturity and currencies that match, as closely as possible, the estimated future cash flows.

No provision is made for sick leave as there is no liability to pay accumulated leave and the sick leave to be taken in future reporting periods is not expected to be greater than the benefits which are expected to accrue in those periods. Contributions are made by the economic entity to an employee superannuation fund and are charged as expenses when incurred.

The number of employees at the end of the year was 12 (2013 – 11).

**(m) Income Tax**

The income of the Association is exempt from income tax under section 50-B of the Income Tax Assessment Act 1997.

**(n) Goods and Services Tax (GST)**

Revenues, expenses and assets are recognised net of the amount of GST, except where the amount of GST incurred is not recoverable from the Australian Taxation Office. In these circumstances the GST is recognised as part of the cost of acquisition of the asset or as part of an item of the expense.

Receivables and payables are stated inclusive of GST. The net amount recoverable from, or payable to, the ATO is included within other receivables or payables in the Statement of Financial Position.

Cash flows are presented on a gross basis. The GST component of cash flows arising from investing or financing activities which are recoverable from, or payable to, the ATO are presented as operating cash flows included in receipts from customers or payments to suppliers.

**(o) Leases**

Lease payments for operating leases, where substantially all the risks and benefits remain with the lessor, are charged as expenses in the periods in which they are incurred.

**(p) Adoption of new and revised Accounting Standards**

The following new and revised Standards and Interpretations have been adopted in the current year and have affected the amounts reported in these financial statements.

Standards affecting presentation and disclosure

Standards and Interpretations in issue not yet adopted

AASB CF 2013-1 'Amendments to the Australian Conceptual Framework' and AASB2013-9 'Amendments to Australian Accounting Standards – Conceptual Framework, Materiality and Financial Instruments' (Part A Conceptual Framework)

This amendment has incorporated IASB's Chapters 1 and 3 Conceptual Framework for Financial Reporting as an Appendix to the Australian Framework for the Preparation and Presentation of Financial Statements. The amendment also included not-for-profit specific paragraphs to help clarify the concepts from the perspective of not-for-profit entities in the private and public sectors.

As a result the Australian Conceptual Framework now supersedes the objective and the qualitative characteristics of financial statements, as well as the guidance previously available in Statement of Accounting Concepts SAC 2 'Objective of General Purpose Financial Reporting'. The adoption of this amending standard does not have any material impact on the consolidated financial statements.

**PARKINSON'S VICTORIA INC.  
NOTES TO THE FINANCIAL STATEMENTS  
FOR THE YEAR ENDED 30 JUNE 2014**

At the date of authorisation of the financial statements, the Standards and Interpretations listed below were in issue but not yet effective.

Standard/Interpretation	Effective for annual reporting periods beginning on or after	Expected to be initially applied in the financial year ending
AASB 9: Financial Instruments and the relevant amending standards <sup>1</sup>	1 January 2017	30 June 2018
AASB 1031 'Materiality (2013)	1 January 2014	30 June 2015
AASB 2012-13 'Amendments to Australian Accounting Standards – Offsetting Financial Assets and Financial Liabilities'	1 January 2014	30 June 2015
AASB 2013-3 'Amendments to AASB135 – Recoverable Amount Disclosure for Non-Financial Assets'	1 January 2014	30 June 2015

The reported results and position of the association will not change on adoption of these pronouncements as they do not result in any changes to the association's accounting policies. The association does not intend to adopt any of these pronouncements before their effective dates.

**Standards and Interpretations affecting the reported results of financial position**

There are no new and revised Standards and Interpretations adopted in these financial statements affecting the reporting results of financial position.

**(q) Standards and Interpretations in issue not yet adopted**

A number of Australian Accounting Standards and Interpretations are in issue but are not effective for the current year end. The reported results and position of the group will not change on adoption of these pronouncements as they do not result in any changes to the group's existing accounting policies. Adoption will, however, result in changes to information currently disclosed in the financial statements. The group does not intend to adopt any of these pronouncements before their effective dates.

**(r) Comparative Figures**

When required by Accounting Standards comparative figures have been adjusted to conform to changes in presentation for the current financial year.

**(s) Related Party Transactions**

A member of the Board is also employed by a bank which the Association has lodged a term deposit. The term deposit was invested on terms and conditions available to the general public and the board member received no other benefits from his employer.



**PARKINSON'S VICTORIA INC.**  
**NOTES TO THE FINANCIAL STATEMENTS**  
**FOR THE YEAR ENDED 30 JUNE 2014**

**NOTE 2: REVENUE**

	2014	2013
	\$	\$
FROM OPERATING ACTIVITIES		
Donations	230,437	192,749
Education	49,290	22,967
Event and fundraising	294,967	320,978
In memorium donations	67,001	55,163
Grants	237,034	221,164
Merchandise and product sales	24,643	10,896
Membership	36,918	41,393
PSP Income	54,763	56,670
Other	63,426	13,903
FROM NON OPERATING ACTIVITIES		
Bequests	94,706	1,209,764
Interest – General Funds	56,616	88,109
– Research Funds	59,607	32,306
Profit of Sale of Fixed Assets	-	768
Project income	-	20,228
Research donations	30,274	19,305
Trusts – Foundation	40,000	20,000
	<u>1,339,682</u>	<u>2,326,363</u>

**PARKINSON'S VICTORIA INC.**  
**NOTES TO THE FINANCIAL STATEMENTS**  
**FOR THE YEAR ENDED 30 JUNE 2014**

**NOTE 3: EXPENDITURE**

	2014	2013
	\$	\$
FROM OPERATING ACTIVITIES		
Employee benefits expense		
- Annual leave	40,739	34,541
- Long Service Leave	9,671	4,835
- Salary and wages	591,400	515,729
- Superannuation	62,648	76,700
- Work cover	10,219	8,995
	<u>714,677</u>	<u>640,800</u>
Finance costs		
- Bank charges	1,139	47
- Bank merchant fees	2,964	4,073
	<u>4,103</u>	<u>4,120</u>
Rental expense on operating leases		
- Minimum lease payments	76,384	73,008
Remuneration of auditor	5,000	5,192
- Audit or review (Advantage Advisors Audit Partnership)	19,707	26,557
Membership Expenses	21,514	1,864
Merchandise and product purchases	24,705	9,108
Education	139,724	166,705
Event and fundraising expenses	687	-
Loss on sale of fixed assets	390,772	261,965
Other	601,422	471,391
FROM NON OPERATING ACTIVITIES		
- Painting with Parkinson's	-	15,098
- Project expenses	44,000	3,236
- Research	-	24,350
- Other	44,000	7,783
	<u>44,000</u>	<u>50,467</u>
	<u>646,109</u>	<u>521,858</u>



**PARKINSON'S VICTORIA INC.**  
**NOTES TO THE FINANCIAL STATEMENTS**  
**FOR THE YEAR ENDED 30 JUNE 2014**

**NOTE 4: CASH AND CASH EQUIVALENTS**

	2014	2013
	\$	\$
Cash on hand	162	447
Cash at bank – General Fund	3,210	3,162
Cash at bank – Research Fund	719,283	726,842
Cash at bank – Parkinson's Endowment Fund	2,023,660	2,233,652
Cash at bank – ANZ General	23,134	7,954
Cash at bank – MECU General	273,757	203,012
	<u>3,043,206</u>	<u>3,175,069</u>

**NOTE 5: TRADE AND OTHER RECEIVABLES**

CURRENT		
Sundry debtors	4,030	22,712

**NOTE 6: INVENTORIES**

Stock on hand	8,016	10,625
---------------	-------	--------

**NOTE 7: OTHER CURRENT ASSETS**

Prepayments	25,882	11,775
Walk in the Park – prepaid expenditure	39,030	21,312
Sundry debtors	32,370	45,114
	<u>97,282</u>	<u>78,201</u>

**PARKINSON'S VICTORIA INC.**  
**NOTES TO THE FINANCIAL STATEMENTS**  
**FOR THE YEAR ENDED 30 JUNE 2014**

**NOTE 8: PLANT AND EQUIPMENT**

	2014	2013
	\$	\$
Leasehold Improvements	-	885
Less Amortisation	-	(132)
	<u>-</u>	<u>753</u>
Computer and software – at cost	74,918	62,315
Less accumulated depreciation	(50,862)	(38,808)
	<u>24,056</u>	<u>23,507</u>
Motor vehicle – at cost	51,122	51,122
Less accumulated depreciation	(36,244)	(26,704)
	<u>14,878</u>	<u>24,418</u>
Office equipment – at cost	37,415	41,728
Less accumulated depreciation	(25,720)	(35,312)
	<u>11,695</u>	<u>6,416</u>
<b>TOTAL PLANT AND EQUIPMENT</b>	<u>50,629</u>	<u>55,094</u>

**( a ) Movement in carrying amounts**

	Leasehold Improvement	Computer and software	Motor Vehicle	Office Equipment	Total
	\$	\$	\$	\$	\$
Balance as at 1 July 2013	753	23,507	24,418	6,416	55,094
Additions	-	12,604	-	9,687	22,291
Disposal/write off	(687)	-	-	-	(687)
Depreciation expense	(66)	(12,055)	(9,540)	(4,408)	(26,069)
Balance as at 30 June 2014	-	24,056	14,878	11,695	50,629



**PARKINSON'S VICTORIA INC.**  
**NOTES TO THE FINANCIAL STATEMENTS**  
**FOR THE YEAR ENDED 30 JUNE 2014**

**NOTE 9: TRADE AND PAYABLES**

	2014	2013
	\$	\$
<b>CURRENT</b>		
Accounts payable	63,537	25,989
Revenue received in advance	48,356	63,490
PAYG (tax) payable	15,479	6,100
Superannuation	20,167	22,910
GST payable	291	2,290
Sundry creditors	-	15
General accruals	7,375	-
Annual leave	56,255	47,325
PSP Funds	-	13,061
Accrued salaries	-	21,952
Credit cards	2,037	4,755
Long Service Leave	11,639	10,644
	<u>225,136</u>	<u>218,531</u>
<b>NON CURRENT</b>		
Long service leave*	3,711	3,427
Other	-	17,767
	<u>3,711</u>	<u>21,194</u>

\*At the 30th June 2014 the Association has no legal liability for non-current long service leave provided for.

**NOTE 10: ACCUMULATED FUNDS**

	2014	2013
	\$	\$
<b>Members Funds</b>		
Accumulated funds at beginning of the financial year	2,572,577	1,542,024
Surplus for the year	(173,541)	1,030,553
Accumulated funds at end of the financial year	<u>2,399,036</u>	<u>2,572,577</u>
<b>Research Funds</b>		
Accumulated funds at beginning of the financial year	529,399	502,137
Surplus for the year	45,881	27,262
Accumulated funds at end of the financial year	<u>575,280</u>	<u>529,399</u>

**PARKINSON'S VICTORIA INC.**  
**NOTES TO THE FINANCIAL STATEMENTS**  
**FOR THE YEAR ENDED 30 JUNE 2014**

**NOTE 11: CASH FLOW INFORMATION**

**a) Reconciliation of cash**

Cash at the end of the financial year as shown in the statement of cash flows is reconciled to the related items in the statement of financial position as follows:

	2014	2013
	\$	\$
Cash on hand	162	447
Cash at bank	3,043,044	3,174,622
	<u>3,043,206</u>	<u>3,175,069</u>

**(b) Reconciliation of cash flow from operations with profit/loss from ordinary activities**

(Deposit)/Surplus from ordinary activities	(127,660)	1,057,814
Depreciation – operating equipment	26,069	28,762
– fundraising	-	1,910
Loss/(Gain) on Sale/Write off of Fixed Assets	687	(768)
Net interest amounts recognised in financing activities	(112,119)	(123,262)
Changes in assets and liabilities:		
- (Increase)/decrease in trade and other receivables	18,682	(14,402)
- Increase)/decrease in inventories	2,609	(5,796)
- (Increase)/decrease in other current assets	(19,081)	13,209
- Increase in trade, other payables and provisions	6,605	30,355
- Increase/(decrease) in other payables - provisions	(17,483)	11,957
Cash flow from operations	<u>(221,691)</u>	<u>999,779</u>



**PARKINSON'S VICTORIA INC.**  
**NOTES TO THE FINANCIAL STATEMENTS**  
**FOR THE YEAR ENDED 30 JUNE 2014**

**NOTE 12: COMMITMENTS**

Leasing Commitments	2014	2013
	\$	\$
<b>a. Operating Lease Commitments</b>		
Being for rent of office and car parking		
Payable – minimum lease payments:		
- Not later than 12 months	78,756	77,850
- Between 12 months and 5 years	68,255	150,668
	<u>147,011</u>	<u>228,518</u>

The Association entered into a non-cancellable lease with a five year term from 1 May 2011 with rent payable monthly in advance. Provisions within the lease agreement require the minimum lease payments to increase by 4% per annum. An option exists to renew the lease at the end of the five year term for an additional term of five years.

**NOTE 13: EVENTS AFTER THE REPORTING PERIOD**

No matters or circumstances have arisen since the end of the financial year which significantly affected or may significantly affect the operations of the Association, the results of those operations, or the state of affairs of the Association in future financial years.

**NOTE 14: CONTINGENT LIABILITIES**

There were no contingent liabilities as at 30 June 2014.

**NOTE 15: ASSOCIATION DETAILS**

The registered office and principal place of business of the Association is:

**Parkinson's Victoria Inc.**  
 8b Park Road  
 Cheltenham VIC 3192

## Our Supporters

**We wish to acknowledge and thank all our donors and supporters. Your continuing generosity and passionate commitment is invaluable in assisting us to achieve our vision of a world without Parkinson's and providing help for today, hope for tomorrow.**

Parkinson's Victoria is very appreciative of being a beneficiary of a number of estates, trusts and foundations which contribute enormously to our work and the services we provide.

Thanks also go to our generous, loyal and hardworking volunteers who give so generously their time and skills.

A special acknowledgement is given to our permanent volunteer, Pam Fox.

### Individuals

Miss Mary Ryan  
 Miss Colleen Foster  
 Mr and Mrs Donald Morrison  
 Ms Joanne M. Cherry  
 Anonymous (5)

### Organisations and Groups

Shepparton Parkinson's Support Group  
 Murray Downs Golf and Country Club  
 Goulburn Valley Health

### Trusts and Foundations

G&I Meagher Charitable Trust  
 Lord Mayor's Charitable Foundation  
 Handelsman Charitable Trust

### Bequests

Estate of the late Gladys Mary Fordyce Williams  
 Estate of the late Joe White  
 Estate of the late Gretchen Kleeman  
 Estate of the late Malcolm Laurence Waterhouse  
 Estate of the late Laurie Craig-Brown  
 Estate of the late John Knox Trezise  
 Estate of the late Mrs Gertrude Mark  
 Estate of the late Malcolm John Teague

### Our Information line

The Parkinson's Victoria Information Line is supported by the Victorian Government.



### A WALK IN THE PARK 2013 SPONSORS





## How you can help

Parkinson's Victoria relies on support from individuals, corporations, the government and community groups to help improve the quality of life for people living with Parkinson's and the search for a cure.

To continue our work in the Victorian community, we need your support.

Make your donation to Parkinson's Victoria by calling us on (03) 9581 8700 or Freecall 1800 644 189.

## Parkinson's Victoria

8B Park Road  
Cheltenham VIC 3192

T: (03) 9581 8700

F: (03) 9583 9952

E: [info@parkinsons-vic.org.au](mailto:info@parkinsons-vic.org.au)

[www.parkinsonsvic.org.au](http://www.parkinsonsvic.org.au)